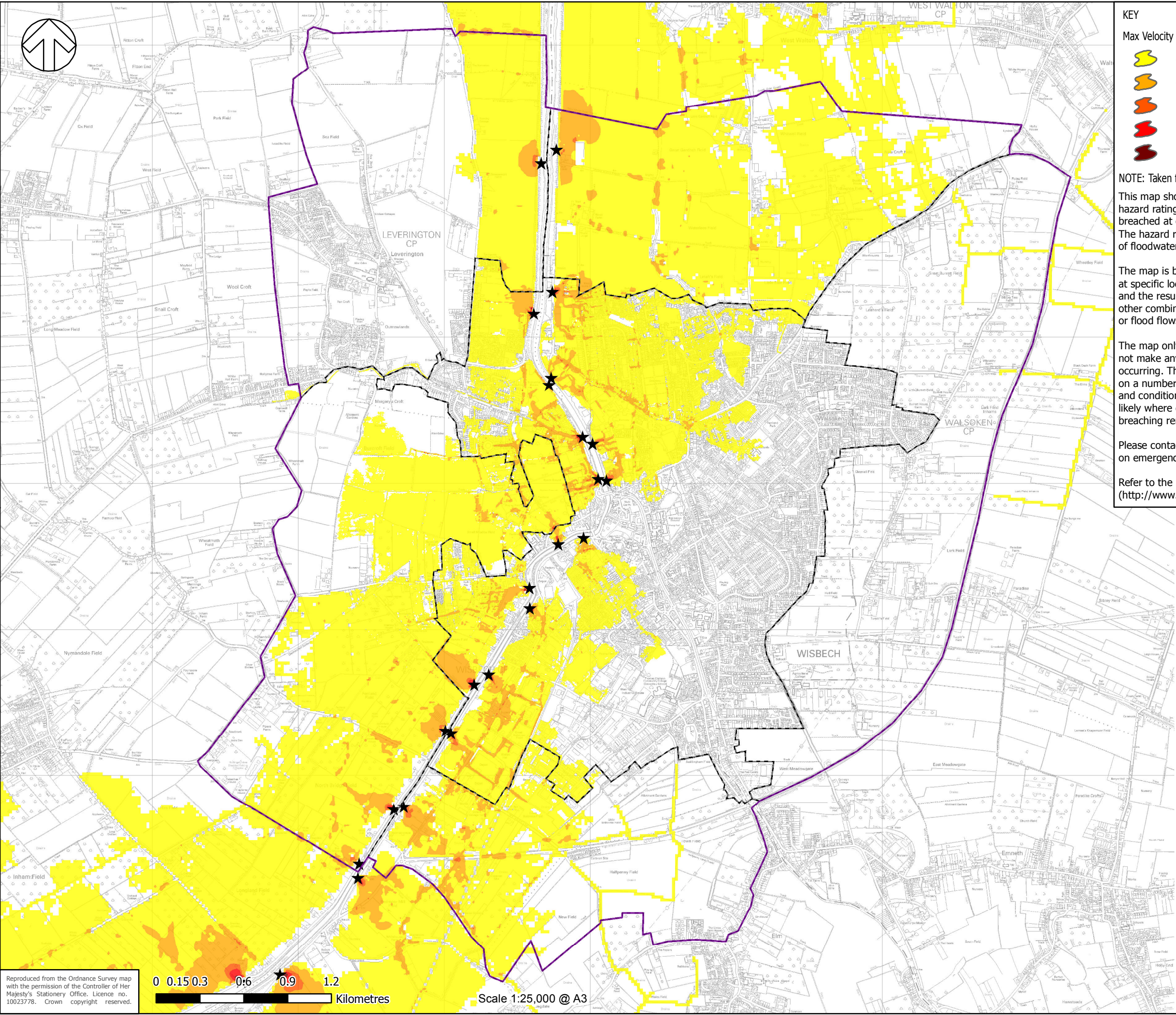










File: Q:\WSP_UK\WSP_D\Herford\Cambridge Wisbech SFRA\DATA\DRAWINGS\Final Maps\E - 2-1-0 - Breach Velocity 200 Overall.mxd
Date Modified: 01/06/2011
Drawn By: ukid001



KEY

Max Velocity (m/s)		Study Area	
	0 - 0.3		Sub Location Boundaries
	0.3 - 1		Modelled Breach Locations
	1 - 1.5		
	1.5 - 2.5		
	2.5+		

NOTE: Taken from the Tidal Nene Hazard Mapping Study (2011)
This map shows the level of flood hazard to people (called a hazard rating) if the Environment Agency flood defences are breached at certain locations, for a range of scenarios. The hazard rating depends on the depth and velocity of floodwater, and maximum values of these are also mapped.

The map is based on computer modelling of simulated breaches at specific locations. Each breach has been modelled individually and the results combined to create this map. Multiple breaches, other combinations of breaches, different sized tidal surges or flood flows may all give different results.

The map only considers the consequences of a breach, it does not make any assumption about the likelihood of a breach occurring. The likelihood of a breach occurring will depend on a number of different factors, including the construction and condition of the defences in the area. A breach is less likely where defences are of a good standard, but a risk of breaching remains.

Please contact the Environment Agency for further information on emergency planning associated with flood risk in this area.

Refer to the Environment Agency website (<http://www.environment-agency.gov.uk>) for contact details.



TITLE:
WISBECH LEVEL 2 SFRA

FIGURE No:
**TIDAL NENE BREACH VELOCITY MAPPING
0.5% (1 IN 200) AEP - 2006
1501 - E - 2.1.0**

Reproduced from the Ordnance Survey map with the permission of the Controller of Her Majesty's Stationery Office. Licence no. 10023778. Crown copyright reserved.