

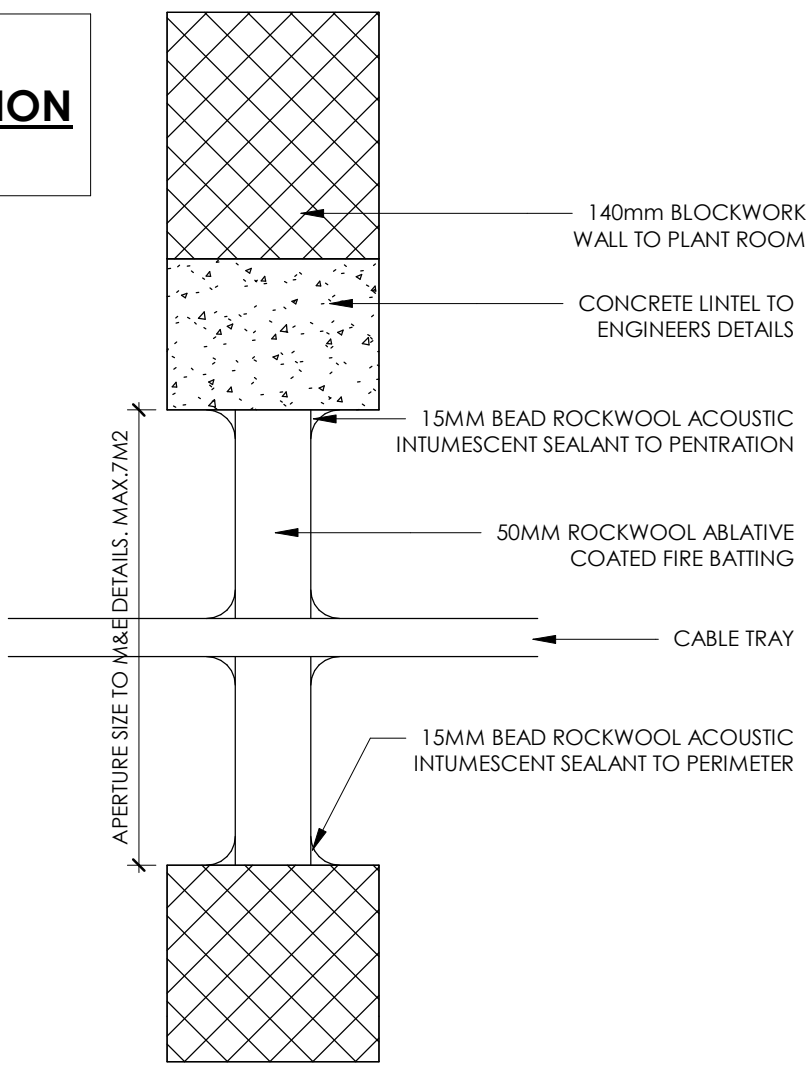
ALL SIGNAGE REFERENCES TAKEN FROM STOCKSIGNS CATALOGUE.  
ALL SCREW HEADS TO BE WHITE AND EXTERNAL DOOR SIGNS TO HAVE DOUBLE SIDED TAPE TO PREVENT BOWING.

FIRE SIGNAGE REFERENCES		
REF.	FIRE SIGNAGE REFERENCES	IMAGE
N14	NO SMOKING, SELF ADHESIVE	
N1	GENERAL FIRE ACTION NOTICE	
N18	NO ENTRY, CIRCLE	
N4	DIRECTION ARROW, WHITE ARROW, BLUE BACKGROUND, CIRCLE	
N20	FIRE ALARM CONTROL PANEL INSIDE	
N5.1	FIRE ESCAPE KEEP CLEAR, SELF ADHESIVE (EXTERNAL)	
N21	DIRECTIONAL FIRE EXIT, RH, SELF ADHESIVE	
N6	FIRE DOOR KEEP CLOSED, SELF ADHESIVE	
N22	DIRECTIONAL FIRE EXIT, LH, SELF ADHESIVE	
N8	FIRE DOOR KEEP LOCKED	
N25	ILLUMINATED FIRE EXIT, WALL MOUNTED	
N11	FIRE ALARM CALL POINT	
N26.1	PUSH BAR TO OPEN, SELF ADHESIVE	
N26.2	2 X PUSH BAR TO OPEN, SELF ADHESIVE (DOUBLE DOOR)	
N27	DIRECTIONAL FIRE EXIT, DOWN	
N12	FIRE EXTINGUISHER, SELF ADHESIVE	

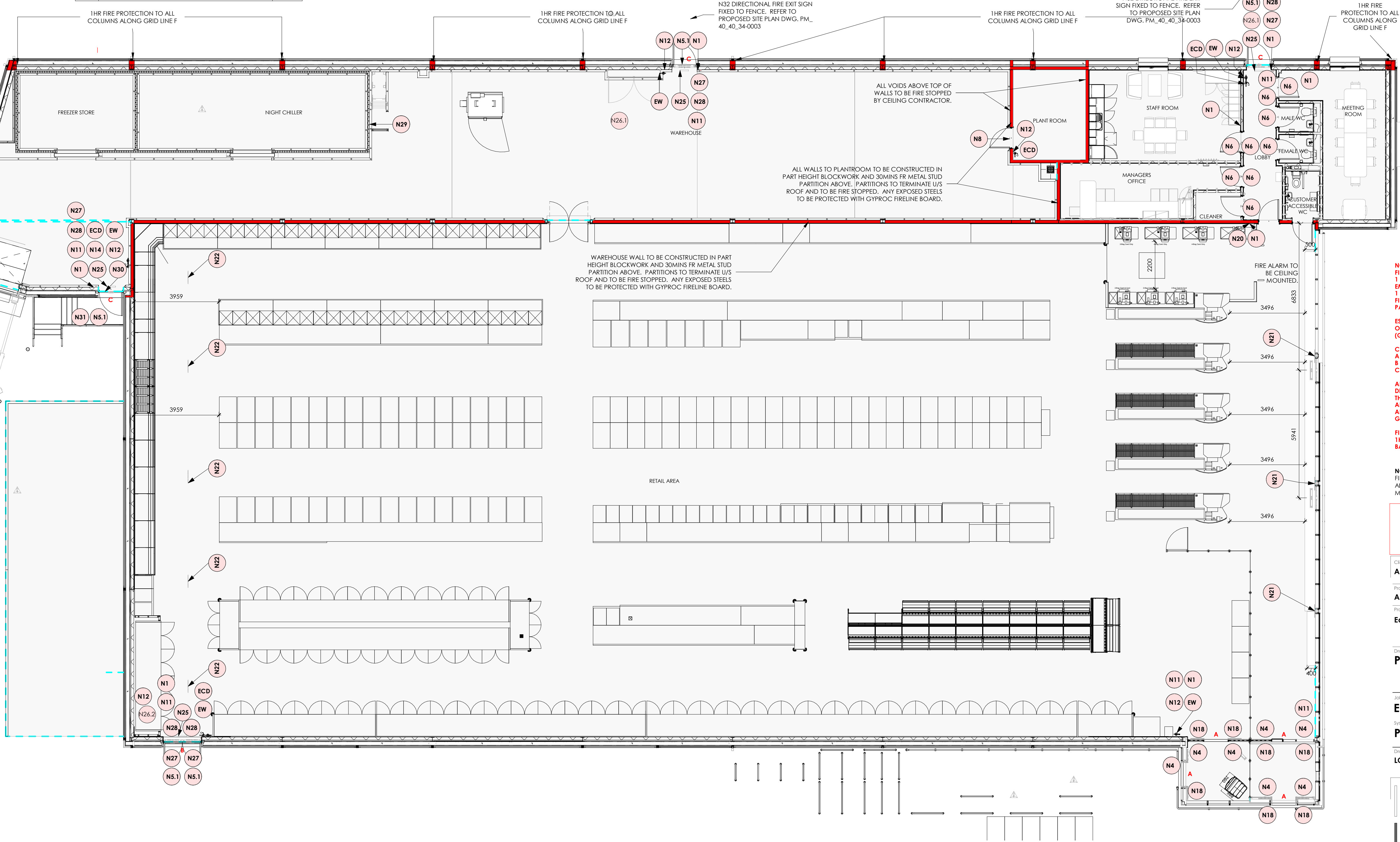
FIRE SIGNAGE REFERENCES		
REF.	DESCRIPTION	IMAGE
N28	EMERGENCY ESCAPE KEEP CLEAR - 'EMERGENCY EXIT THIS AREA MUST BE KEPT CLEAR AT ALL TIMES'	
N29	AUTHORISED PERSONNEL, SELF ADHESIVE	
N30	PRESS LEVER TO OPEN	
N31	THIS STORE IS FITTED WITH A CO2 REFRIGERATION SYSTEM	
N32	DIRECTIONAL FIRE EXIT, RH, SCREW FIXED	

FIRE EXTINGUISHER SCHEDULE					
ROOM	Ref.	TYPE	LABEL COLOUR	MOUNTING	COMMENTS
LOADING_BAY	ECD	CARBON DIOXIDE	BLACK	WALL MOUNTED	ADJACENT TO DE4
LOBBY	ECD	CARBON DIOXIDE	BLACK	WALL MOUNTED	ADJACENT TO DE4
PLANT ROOM	ECD	CARBON DIOXIDE	BLACK	WALL MOUNTED	ADJACENT TO DG9
RETAIL AREA	ECD	CARBON DIOXIDE	BLACK	WALL MOUNTED	ADJACENT TO DE3
4					
LOADING_BAY	EW	WATER (HYDROSPRAY)	RED	WALL MOUNTED	ADJACENT TO DE6
LOBBY	EW	WATER (HYDROSPRAY)	RED	WALL MOUNTED	ADJACENT TO DE4
RETAIL AREA	EW	WATER (HYDROSPRAY)	RED	WALL MOUNTED	ADJACENT TO DG1
RETAIL AREA	EW	WATER (HYDROSPRAY)	RED	WALL MOUNTED	ADJACENT TO DE3
WAREHOUSE	EW	WATER (HYDROSPRAY)	RED	WALL MOUNTED	ADJACENT TO DE4
5					
TOTAL: 9					

TYPICAL PLANT  
ROOM PENETRATION  
SCALE: 1:5



REV	DATE	DESCRIPTION	DRW	CHK
C-01	25.07.2022	INITIAL TENDER ISSUE.	LC	DM/KB
C-02	28.09.2022	CONSTRUCTION ISSUE	LC	DM/KB
C-03	16.12.2022	N11, N12 N32 SIGNS ADDED. FOAM FIRE EXTINGUISHER ADJACENT DG1, DE3, DE4 AND LOADING CHANGED TO WATER (HYDROSPRAY). FOAM AND CARBON DIOXIDE FIRE EXTINGUISHER REMOVED FROM MEETING ROOM, STAFF ROOM AND MANAGERS OFFICE. N12 AND N14 SIGN REMOVED FROM MEETING ROOM AND WELFARE LOBBY AND WAREHOUSE FOAM FIRE EXTINGUISHER CHANGED TO WATER (HYDROSPRAY). MERCHANDISE LAYOUT UPDATED. ALL AS CURRENT STANDARD STORE. STRUCTURAL COLUMNS ALONG GRID LINE F TO BE 1HR FIRE RESISTANT AS REQUESTED BY PWC. EXTERNAL WALL AND HANDRAIL TO DE5 REMOVED.	K8	DM
C-04	04.04.2023	DUAL SHOOT TILLS REMOVED AND REPLACED WITH SINGLE TILLS.	LC	KJB
C-05	20.06.2023	SHOPFRONT SPECIFICATION UPDATED TO SF52. FINAL CONSTRUCTION ISSUE.	LC	DCM/KB



NOTE:  
FIRE ALARM/DETECTION SYSTEM TO COMPLY WITH BS 5839 PART 1 - 2002  
EMERGENCY LIGHTING SYSTEM TO COMPLY WITH BS 5226 PART 1 - 2005  
FIRE EXIT AND ASSORTED SIGNAGE TO COMPLY WITH BS 5499 PART 1 & 4

ESCAPE WIDTH ARE BASED ON A PROPOSED SALES FLOOR AREA OF 1315M2 AND AN OCCUPANCY OF 1 PERSON PER 5M2 (GIVING TOTAL OF 263 PERSONS)

CLEAR OPENING WIDHTH TO DOORS  
A = 1100MM CLEAR  
B = 1315MM CLEAR  
C = 1016MM CLEAR

ALL AUTOMATIC DOORS TO BE PROVIDED WITH A FAIL SAFE DEVICE TO BS 7036: PART 2 1996 TO ALLOW DOORS TO OPEN IN THE EVENT OF POWER FAILURE OR AN ACTIVATION OF THE FIRE ALARM.  
ALL EMERGENCY LIGHTING LOCATIONS TO THE MAIN CEILING GRID TO BE TO M&E CONSULTANTS REQUIREMENTS

FIRE BARRIERS TO TSA TEXTILES PHENIX FIREPLY TO ACHIEVE 1HR INTEGRITY AND BE SITED AT MAXIMUM 20M BETWEEN BARRIERS

NOTE:  
FIRE SAFETY SIGNAGE TO COMPLY WITH BS 5499. FIRE PLAN AND AISLE WIDTHS TO BE COORDINATED WITH THE LATEST MERCHANDISING DRAWINGS.

FINAL CONSTRUCTION  
ISSUE

Client  
ALDI - Aldi Stores Ltd.

Project Title  
ALDI BLADE ROOF 13000BM

Project Address  
Eastrea Road, Whittlesey

Drawing Title  
PROPOSED FIRE PLAN

Job No.	Originator	Zone	Level	Type	Rev
E1532	STO	XX	00	DR	A
System Classification		Drawing No.	Suitability	Revision	
PM_80_50_30-0001		CR	C-05		
Drawn	Checked	Date	Scale	Size	
LC	DM/KB	12.04.2022	As indicated	A1	

The Lodge  
Coleshill Manor  
Birmingham  
B46 1DL  
TEL : 0121 747 1943

1 Dunston Place  
Dunston Road  
Chesterfield  
S41 8NL  
TEL : 01246 389 860

Web : [www.stoasarchitects.co.uk](http://www.stoasarchitects.co.uk)

STOAS

GF  
PROPOSED FIRE PLAN  
1 : 100