

539000

540000

305000

305000

304000

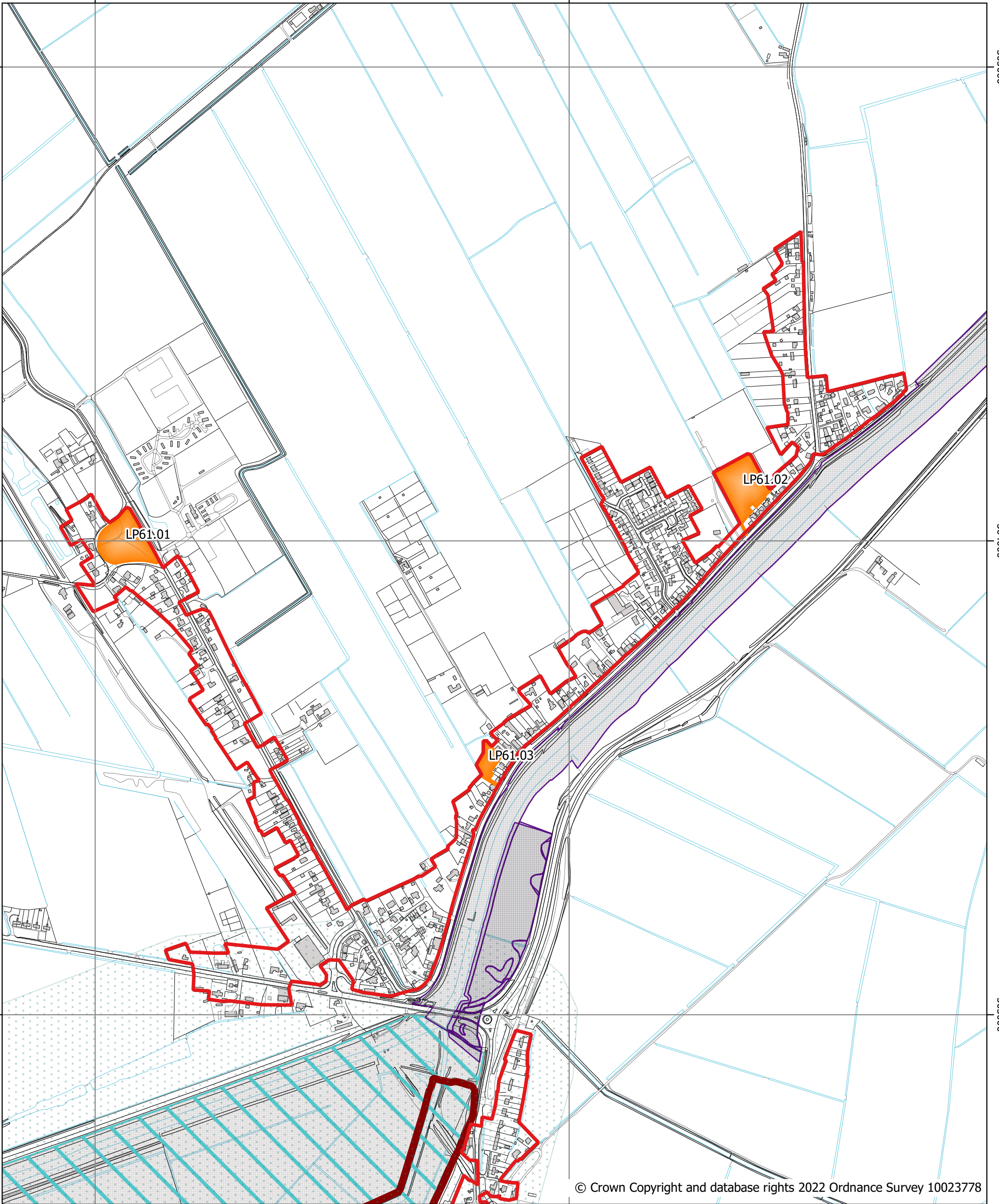
304000

303000

303000

539000

540000



© Crown Copyright and database rights 2022 Ordnance Survey 10023778



Draft Policies Map (August 2022) Guyhirn (Inset 13)

Key

- Residential / Residential-led development (LP61)
- Settlement Boundary (LP1)
- Special Area of Conservation (LP23)
- County Wildlife Site (LP24)

- Special Protection Area & Ramsar Site (LP24)
- Sites of Special Scientific Interest (LP24)
- Goose & Swan Functional Land IRZ (LP24)



Scale: 1:7500