

Date: _____



Name: _____

Recycle at home

Activity For Reception





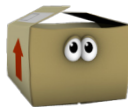





**Blue Bin
Recycling**



**Green Bin
Household
Waste**

Which of these things can be recycled and which cannot?

With an adults help, cut out each picture, and place them next to the correct bins above.

			
Plastic bottle	Crisp packets	Cardboard box	Nappy
			
Food waste	Empty tissue roll	Plastic pouch	Drinks can

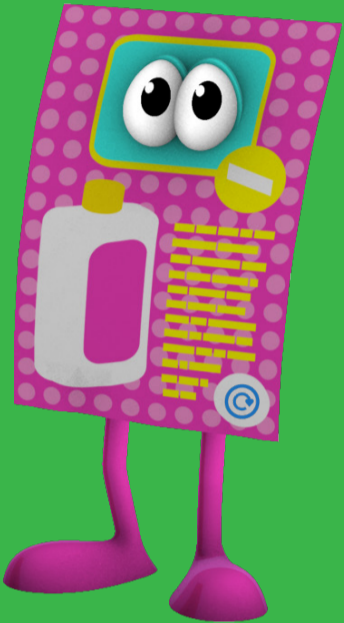
To find out what you can and can't recycle please visit



www.gettingsorted.org



Scrunch, scrunch, scrunch
the paper,
throw them in the blue bin.
We can all help save the
earth, if we all pitch in.



Squash, squash, squash
the cartons,
throw them in the blue bin.
We can all help save the
earth, if we all pitch in.



THE RECYCLING SONG

Same tune as row, row,
row your boat



Wash, wash, wash the tins,
throw them in the blue bin.
We can all help save the
earth, if we all pitch in.



Save, save, save the bottles.
throw them in the blue bin.
We can all help save the
earth, if we all pitch in.