

Advice

Help to recycle by doing this



CLEAN

Give your items a quick rinse. Any food or liquid left will contaminate other recycling.



DRY

Wet items can also contaminate other recycling.

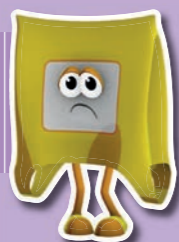


LOOSE

Don't put recycling in carrier bags or sacks inside your recycling bin.

Top Tips

Bags cannot be recycled in the blue bin. Take them to the shops to be recycled.



Recycling symbol

NOT a recycling symbol



Check our website for more help.



Batteries leak harmful chemicals even small ones. Take them back to the shops to be recycled safely.

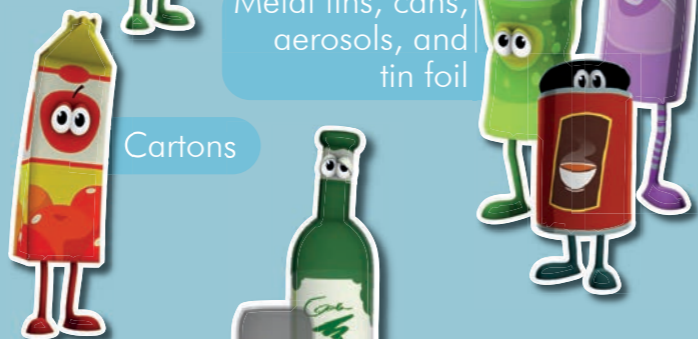
fenland.gov.uk/volunteers

Blue bin rubbish

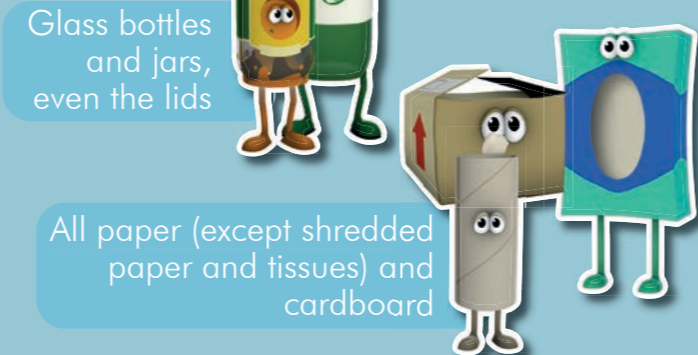
We can recycle



Plastic bottles, pots, tubs and trays



Metal tins, cans, aerosols, and tin foil



Glass bottles and jars, even the lids

All paper (except shredded paper and tissues) and cardboard

Pledge to recycle more and help someone you know to recycle and get help and advice from us.

fenland.gov.uk/volunteers

Brown bin rubbish

Garden waste



If you subscribe to the garden waste service, this is what you can put into your brown bin.



All leaves, weeds and flowers (except invasive species like Japanese Knotweed).



All garden clippings like grass and hedge trimmings.



All garden fruits and vegetables can go in here.

Home composting tips

Why not make your own compost heap at home? Or talk to your neighbours and make a communal composting area. For information about making your own compost visit our website.



Shredded paper is too small to recycle and mixes with other items. It's perfect for home composting.

fenland.gov.uk/volunteers

Green bin rubbish

Non-recyclable rubbish



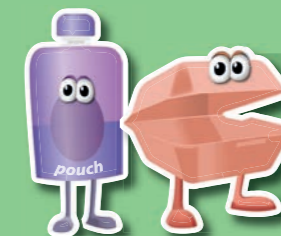
How to tell if you can recycle a wrapper. Scrunch it. Let it go!



If it stays in a ball - **recycle**



If it doesn't stay in a ball - it can't be recycled



Sometimes charities collect packaging to raise money. If not put them in the green bin.

Remember

Tissues are **not** recyclable.



Animal waste - bag it, bin it.



Cigarette butts are made from non recyclable plastic.



Disposable nappies cannot be recycled. Try switching to reusable nappies. They are cheaper and help the environment.



fenland.gov.uk/volunteers

Did you know?

Need more room for your recycling?

Order some recycling sacks or an extra bin online.



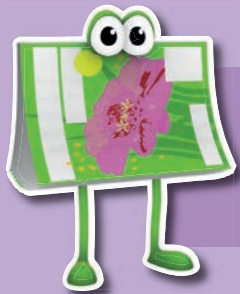
Large empty boxes will be taken as side waste on recycling weeks.



£140 million worth of textiles are binned each year. Donate them to a clothes bank to be reused or recycled. Textiles that are put into your blue bin will go to landfill.

Why not volunteer and hold a recycling event in your community?

Contact us, we can help.

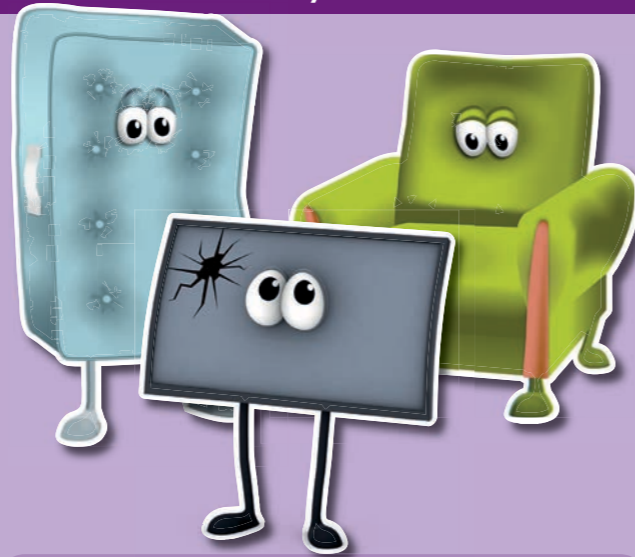


Want to help someone improve their recycling? Pledge to recycle online today to get your **free** recycling pack.

fenland.gov.uk/volunteers

Can't get to the tip?

Use the FDC bulky waste service



Who's taking your rubbish?

If you are not using the bulky waste service make sure the person collecting your rubbish has a waste carrier license, if it is fly-tipped, **you** may be fined a minimum of **£400!**

For an affordable, reliable service, direct from your kerbside book a bulky waste collection visit fenland.gov.uk/bulkywaste or call 01354 654321.

Remember good items can always go to the charity shop.

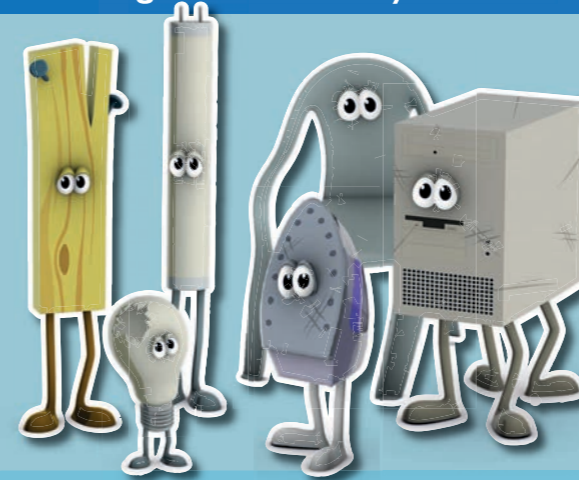
Putting your rubbish in the right place can save over **£80,000** just in Fenland. Help us save money for our community and protect our environment.



fenland.gov.uk/volunteers

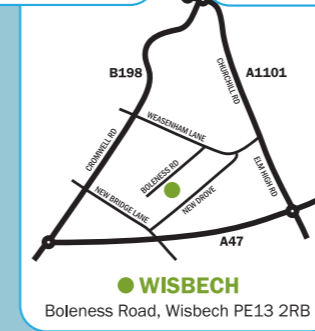
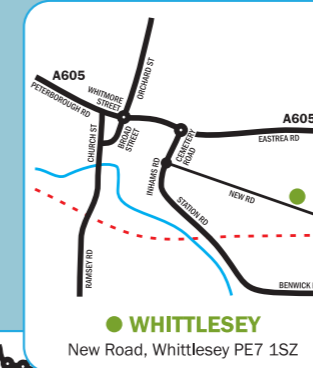
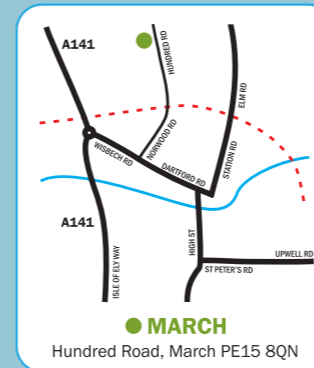
Household Recycling Centres

Cambridgeshire County Council



Remember:

You can always take your rubbish to the household recycling centre.



For opening times and vehicle restrictions, visit cambridgeshire.gov.uk/recycling_centres

Recycling Guide



This leaflet was developed by Getting It Sorted Volunteers from across Fenland to help you get your rubbish sorted.