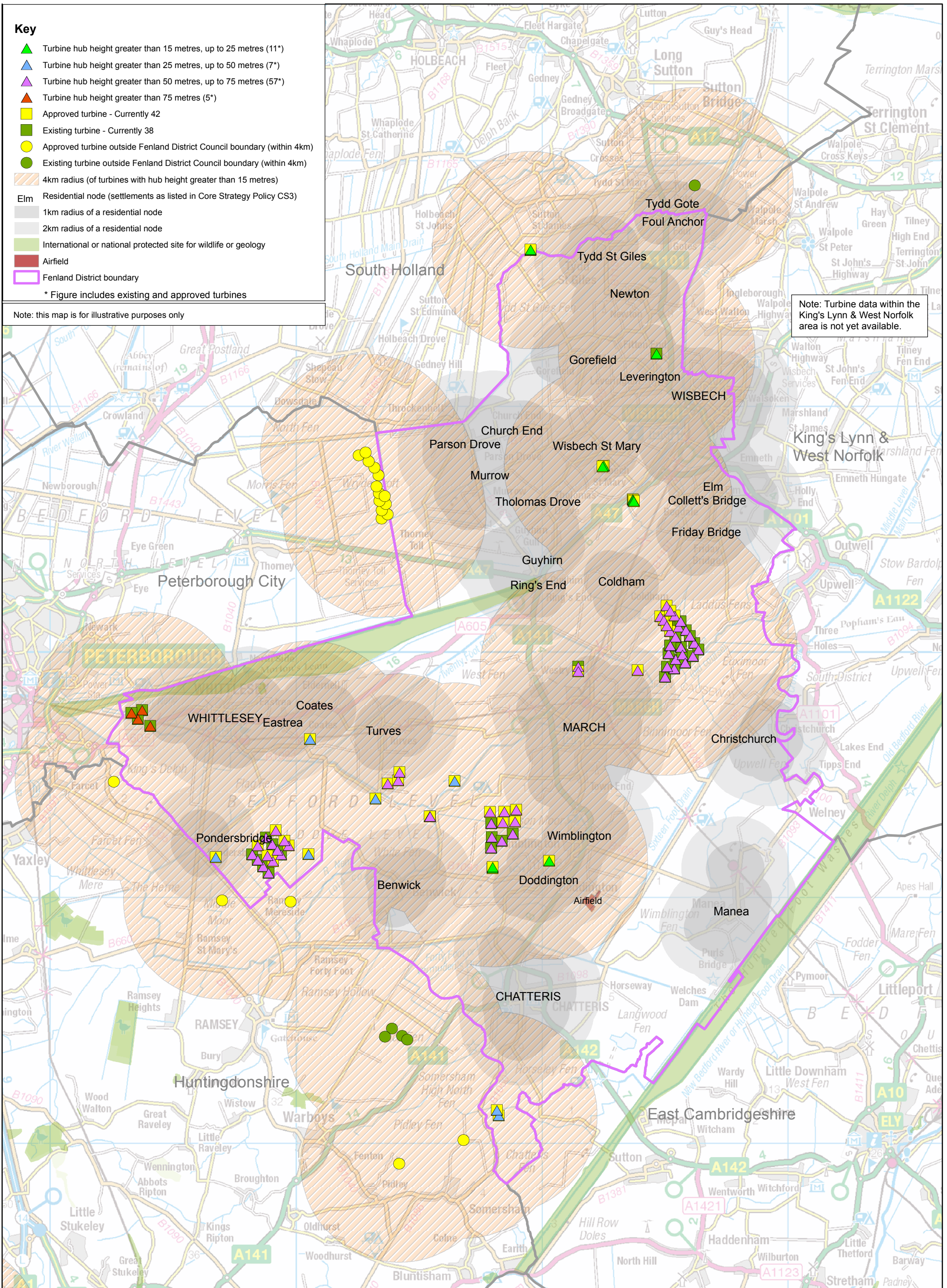


Key

- ▲ Turbine hub height greater than 15 metres, up to 25 metres (11")
 - ▲ Turbine hub height greater than 25 metres, up to 50 metres (7")
 - ▲ Turbine hub height greater than 50 metres, up to 75 metres (57")
 - ▲ Turbine hub height greater than 75 metres (5")
 - Approved turbine - Currently 42
 - Existing turbine - Currently 38
 - Approved turbine outside Fenland District Council boundary (within 4km)
 - Existing turbine outside Fenland District Council boundary (within 4km)
 - 4km radius (of turbines with hub height greater than 15 metres)
 - Elm** Residential node (settlements as listed in Core Strategy Policy CS3)
 - 1km radius of a residential node
 - 2km radius of a residential node
 - International or national protected site for wildlife or geology
 - Airfield
 - Fenland District boundary
- * Figure includes existing and approved turbines

Note: this map is for illustrative purposes only

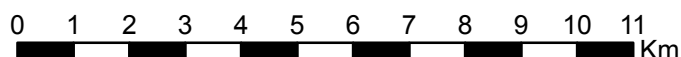
Note: Turbine data within the King's Lynn & West Norfolk area is not yet available.



Created 07/05/2014. For the latest version of this map visit www.fenland.gov.uk

Map of existing turbines and key landscape characteristics

© Crown Copyright and database rights 2014 Ordnance Survey 10023778



Scale = 1:135,000
A3

